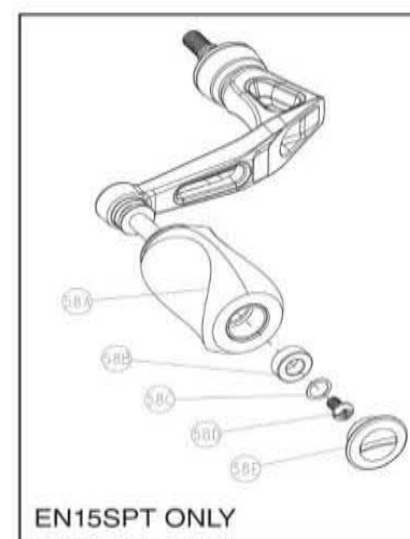
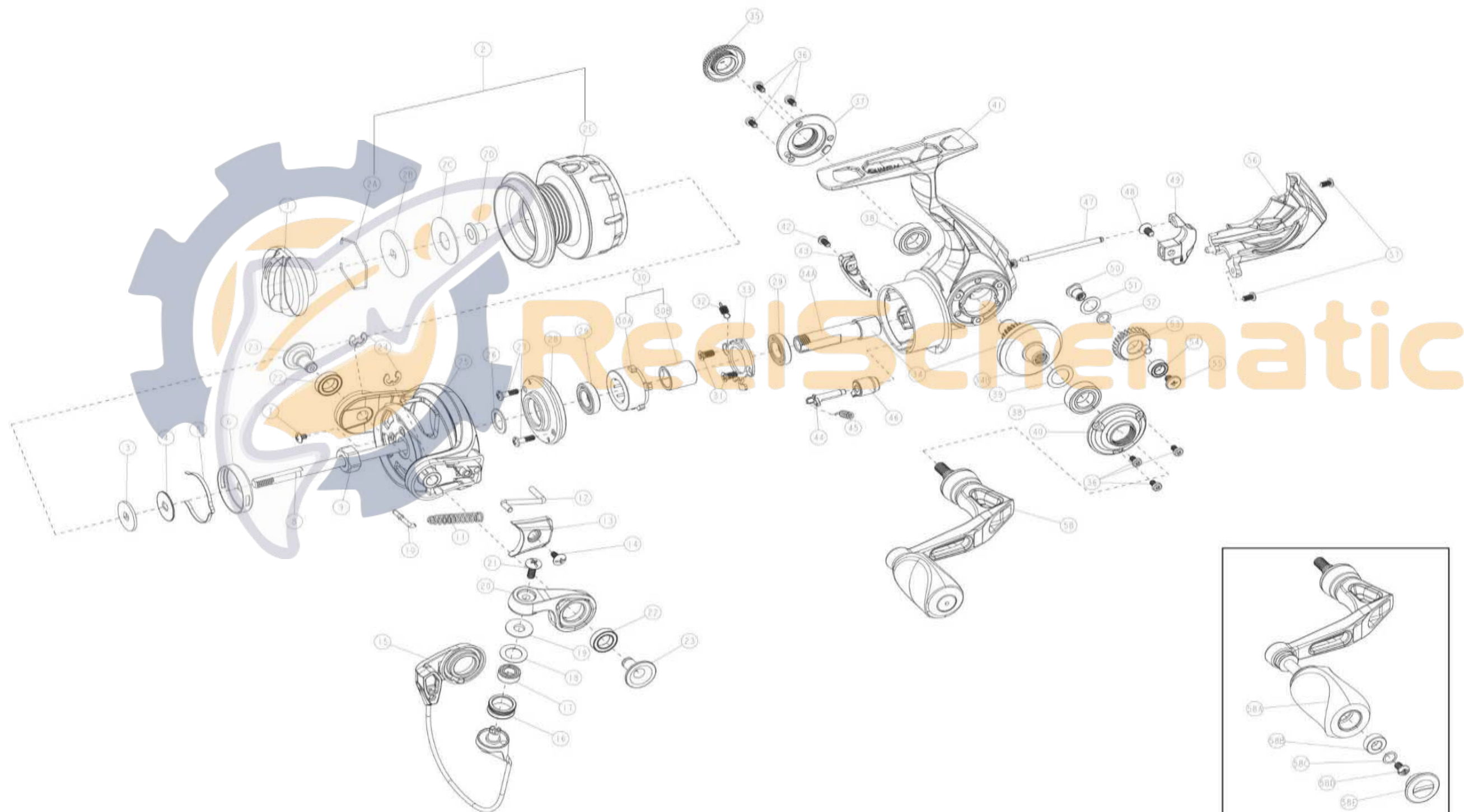


# QUANTUM<sup>®</sup>

EN15SPT



## QUANTUM EN15SPT PART LIST

Key #	Description	Part No.	Qty	Key #	Description	Part No.	Qty
1	Drag Knob Assembly	VAB332-11	1	31	Ball Bearing Retainer Screw	CF107-01	2
2	Spool Kit Include	TAE421-01	1	32	One Way Clutch Spring	PAE216-01	1
	2A - Retaining Ring	VAB038-01	1	33	Ball Bearing Retainer	PAE040-01	1
	2B - Drag Washer "D"	VAB080-01	1	34	Gear Kit Include	NA	
	2C - Drag Washer "B"	VAB033-01	1		34A - Pinion	TAE011-01	1
	2D - Bushing	PG141-01	2		34B - Drive Gear	TAE012-01	1
	2F - Spool Assembly	TAE321-01	1	35	Dust Cap	TAE054-01	1
3	Spool Adjust Washer	PG030-01	2	36	Screw	PAE107-02	6
4	Spool Washer	PG080-01	1	37	Body Cosmetic ring	TAE142-01	1
5	Spool Click Spring	PG114-01	1	38	Ball Bearing	CH028-05	2
6	Clicker Holder	PG110-01	1	39	Drive Gear Adjust Washer	GU105-08	1
7	Screw	BAA094-01	1	40	Body Cosmetic ring	TAE161-01	1
8	Main Shaft	TAE015-01	1	41	Body	TAE001-01	1
9	Rotor Nut	PAE006-01	1	42	Trip Bumper Screw	LF057-02	1
10	Cam	TAE031-01	1	43	Trip Bumper	PAE119-01	1
11	Coil Spring	TAA022-01	1	44	A/R Cam	PAE090-01	1
12	Kick Lever	TAE019-01	1	45	Coil Spring	PAE049-01	1
13	Rotor Cover	TAE087-01	1	46	A/R Switch	PAE059-02	1
14	Rotor Cover Screw	CW125-01	1	47	Guide Pin	TAE211-01	1
15	Bail Assembly	VAB347-05	1	48	Screw	RQ100-01	1
16	Line Roller	PQ004-03	1	49	O/S Slider	TAE025-01	1
17	Ball Bearing	DT202-04	1	50	O/S Gear Fixed Pin	PAE149-01	1
18	Line Roller Washer	PQ102-51	1	51	O/S Gear Washer	PAE109-01	1
19	Line Roller Collar	PQ102-01	1	52	O/S Gear Bushing	PAE158-01	1
20	Arm Lever	VAB007-05	1	53	O/S Gear Assembly	TAE353-01	1
21	Line Roller Screw	AQ108-01	1	54	O/S Gear Ball Bearing	EH158-05	1
22	Ball Bearing / Bushing	BAA158-01	2	55	O/S Gear Screw	QAE111-01	1
23	Pin	TAE042-01	2	56	Rear Cap	TAE250-01	1
24	E-Clip	QW120-01	2	57	Screw	AT136-04	2
25	Rotor	TAE009-01	1	58	Handle Assembly	VAB318-11	1
26	Rotor Adjust Washer	AAA110-01	1		Handle Knob Kit Include (EN Only)	NA	
27	Ball Bearing Holder Screw	PAE061-01	2		58A - Handle Knob Assembly	WAB313-06	1
28	Ball Bearing Holder	TAE122-01	1		58B - Bushing	PG158-01	1
29	Pinion Ball Bearing	TAA028-04	2		58C - Washer	DH133-01	1
30	One Way Clutch Kit Include	NA			58D - Screw	QW123-01	1
	30A - Clutch Assembly	QAE363-01	1		58E - Handle Knob Cap	WAB138-01	1
	30B - Clutch Sleeve	QAE139-01	1				